

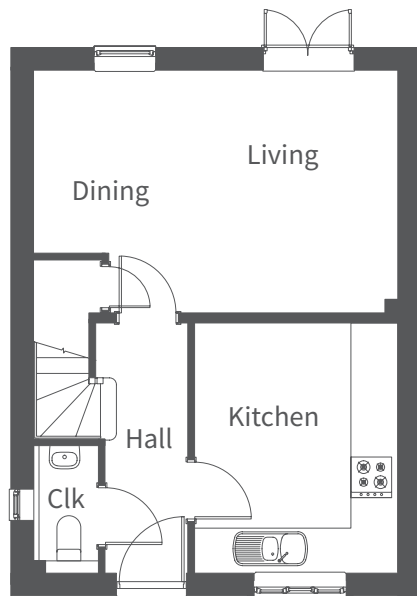


A lovely home benefiting from high specification and well-planned accommodation over two floors. On the ground floor the entrance hall leads to the cloakroom and kitchen, then on to the rear aspect living/dining room with French doors opening to the enclosed rear garden. The stairs, with under stairs storage, sweep up and round to the first floor and master bedroom with en-suite, two further bedrooms, family bathroom and storage. Two parking spaces are provided.

The Forth is available in one exterior finish with a slate tiled roof:

## Coloured Render

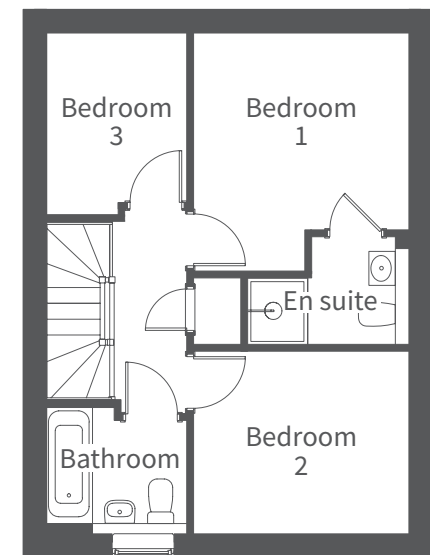
Beige: Plots 62 and 63



Ground Floor

Ground Floor	Millimetres	Feet / inches
Living / Dining	5360 x 3565	17'7" x 11'8"
Kitchen	3675 x 2955	12'1" x 9'8"
First Floor		
Bedroom 1	3510 x 3175	11'6" x 10'5"
En-suite	2380 x 1610	7'10" x 5'3"
Bedroom 2	3170 x 2690	10'5" x 8'10"
Bedroom 3	2675 x 2090	8'9" x 6'10"
Bathroom	2090 x 1890	6'10" x 6'2"

**Please note: other floor plans and elevations for each property are available. As each house is built individually, maximum dimensions shown may vary +/- 50mm and the internal finishes may not always be the same.** External finishes, materials, landscaping, positions and colours of windows and garages (where applicable) may also vary. Properties can also be constructed as mirror images of that shown. Please ask if you require further details or clarification.



First Floor